

Past Simple Tense

PRIMERO MEDIO

USO DEL PASADO SIMPLE

1.El Pasado simple se utiliza, para hablar de una acción concreta que comenzó y acabó en el pasado. Puede ser algo que ya sucedió una vez .



We **travelled** to France last year.

viajamos a Francia el año pasado.

AFFIRMATIVE FORM

La forma afirmativa del Pasado Simple esta compuesta de:
sujeto o pronombre → el verbo en **pasado** → complementos.

Para la conjugación del verbo en **pasado**, debemos distinguir **2** tipos de verbos: **Verbos regulares y Verbos irregulares.**

1. VERBOS REGULARES: Los verbos regulares agregan la terminación **“D”** o **“ED”**, para cambiar su forma base o infinitivo a Pasado

1. WORK → WORKED

2. CLOSE → CLOSED

3. Consonant + y ,cambia por “i” y agrega “ED”

STUDY → STUDIED

Pero si el verbo termina en vocal + y, solo agrega “ED”

PLAY → PLAYED

4. STOP → REPITE CONSONANTE (excepto “y” o “w”) → STOPPED

2. VERBOS IRREGULARES: Son aquellos que para formar su pasado pueden cambiar totalmente , parcialmente o quedar exactamente igual.

GO → **WENT** TO BE → **WAS-WERE**

GET → **GOT**

READ → **READ**

Example

1. VERBO REGULAR

They **played** in the park: Ellos jugaron en el parque

They **wanted to play** in the park

2. VERBO IRREGULAR

They **went** to the park: Ellos fueron al parque

They **wanted to go** to the park

SOLO EN LA FORMA
AFIRMATIVA EL
VERBO
**SE CONJUGA EN
PASADO**



INTERROGATIVE FORM

La forma interrogativa del Presente Simple está compuesta de:

AUXILIAR **DID** → SUJETO O PRONOMBRE → VERBO EN SU **FORMA BASE** → COMPLEMENTOS ?

NEGATIVE FORM

La forma negativa del Presente Simple está compuesta por:

SUJETO O PRONOMBRE-AUXILIAR **DID-NOT**-VERBO EN SU **FORMA BASE**-COMPLEMENTOS

La forma negativa puede ser abreviada de la siguiente manera

DID NOT -**DIDN'T**

EXAMPLE INTERROGATIVE AND NEGATIVE FORM

INTERROGATIVE FORM

Did they **play** in the park?

Did they **go** to the park?

NEGATIVE FORM

They **did not** / **didn't** **play** in the park

They **did not** / **didn't** **go** to the park

SHORT ANSWERS (RESPUESTAS CORTAS)

AFFIRMATIVE

Yes → I-YOU-HE-SHE-IT-WE-YOU-THEY → **DID**

NO → I-YOU-HE-SHE-IT-WE-YOU-THEY → **DIDN'T**

EN LA FORMA
INTERROGATIVA Y
NEGATIVA EL VERBO
PERMANECE EN LA
FORMA BASE



Expresiones de tiempo pasado en inglés

Con el pasado simple se puede usar una variedad de expresiones temporales, todos los cuales se refieren a tiempos pasados y terminados:

Yesterday:ayer

The other day: el otro día

Last week, last month, last year:semana pasada,mes pasado,año pasado

When (+ un momento concreto)cuando

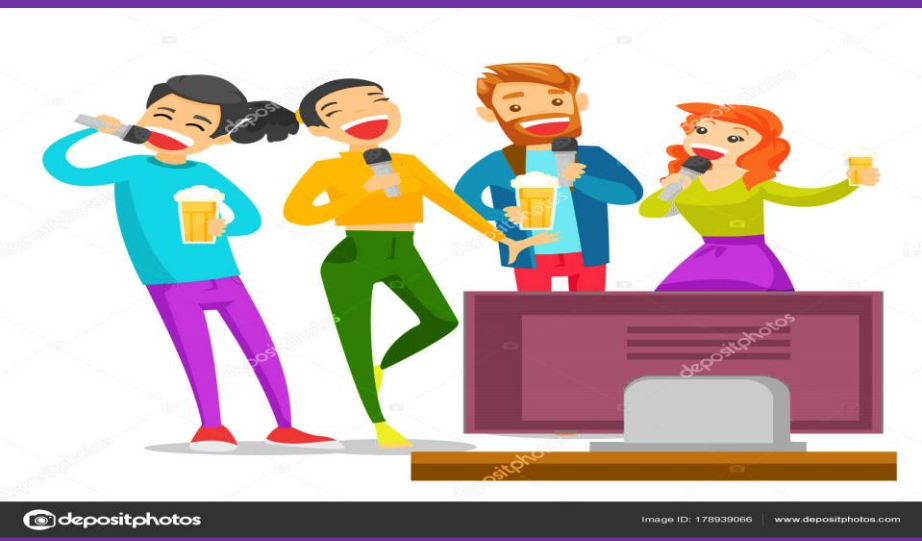
Ago (para cuando hablas de una cierta cantidad de tiempo) hace

In (+ año) en

The day before yesterday:antes de ayer



Last summer we **got** married.
El verano pasado nos casamos.



We **sang** in a karaoke **last night**
cantamos en un karaoke **anoche**



She **went** to Egypt **three years ago**
Ella fue a Egipto hace tres años



When he was in Las Vegas, he **won** the lottery
Quando el estaba en Las Vegas, gano la loteria

FORMAS DEL PASADO SIMPLE (VERBO REGULAR)

AFFIRMATIVE	INTERROGATIVE	NEGATIVE
I played	Did I play?	I did not play
You played	Did you play?	You did not play
He played	Did he play?	He did not play
She played	Did she play?	She did not play
It played	Did it play?	It did not play
We played	Did we play?	We did not play
You played	Did you play?	You did not play
They played	Did they play?	They did not play

FORMAS DEL PASADO SIMPLE (VERBO IRREGULAR)

AFFIRMATIVE	INTERROGATIVE	NEGATIVE
I went	Did I go?	I did not go
You went	Did you go?	You did not go
He went	Did he go?	He did not go
She went	Did she go?	She did not go
It went	Did it go?	It did not go
We went	Did we go?	We did not go
You went	Did you go?	You did not go
They went	Did they go?	They did not go